



 **SCAFFCO**
Formwork & Scaffolding

Shorelok System (Ring Lock) **The Superior Formwork System for Shoring, Load Bearing and Access Applications**



Shorelok System offers high load capacity, maximum safety and improves productivity while being easy to handle.

Shorelok is a heavy duty modular steel shoring system designed for large shoring heights and high loads. With various well designed sizes in verticals, horizontals and an extensive range of accessories, shorelok is the first choice in modular heavy duty shoring. The system provides perfect adaptability to irregular layout with ease of assembly and low cost. Options for finish are available in painted or galvanized.

Versatility

To suit various site requirements the shorelok system is produced in two versions with compatible components:

- The **Shorelok 48**, offers a shoring capability with an infinite height adjustment and a working load-carrying capacity of up to 40kN per leg with horizontal lifts of 1.5m.
- The **Shorelok 60**, can be used efficiently and economically with an infinite height adjustment to transfer 75 kN SWL leg load with horizontal lifts of 1.5m
- Extra load-bearing capacity can be generated by reducing horizontal ledger lifts.

Easy to Handle

The Shorelok rosette provides flexibility to lock in a number of angles, plus quickly and accurately aligns 45 to 90 degree using the notch position. A maximum of eight connections are present in one plane which enables the system to cover various shapes of structures rigidly and safely.

Improves Productivity

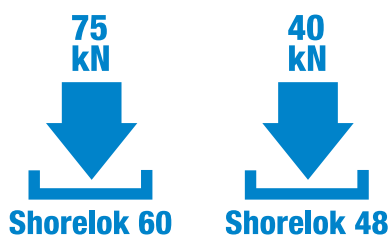
The system segments fit perfectly into the unique rosette, then, the joint is locked tightly by simply hammering a captive wedge into place. The rosettes are welded to the verticals, eliminating the need for measuring when ledgers and braces are connected on the site. As a result, the system can be erected quickly, saving time and labour.

Maximum Safety

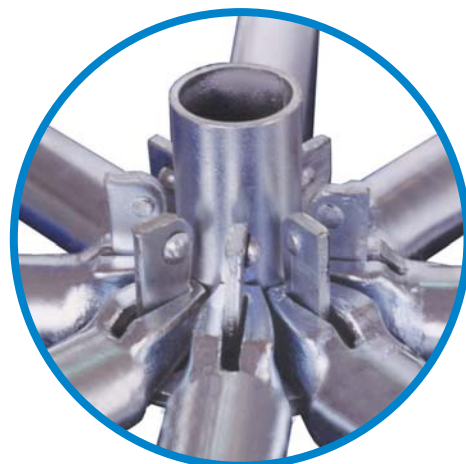
Rational weight with excellent load bearing capacity, a 60.3mm dia. high grade steel verticals (standards) and 48mm dia. top and bottom adjustable jackets, with the 48.3mm dia. horizontals (ledgers) and ability of bracing in multi-directions provide the system with its premium features to transfer construction loads safely and efficiently.

High Load Capacity

Up to 75kN saves material and labour costs, with reductions in the number of foundations and formwork primary beams



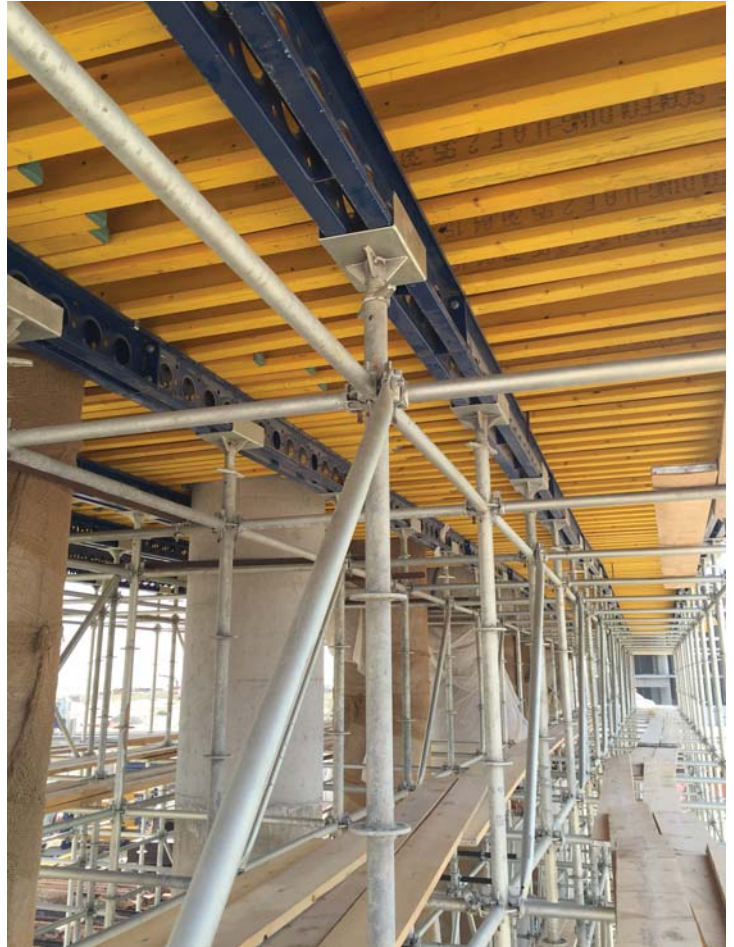
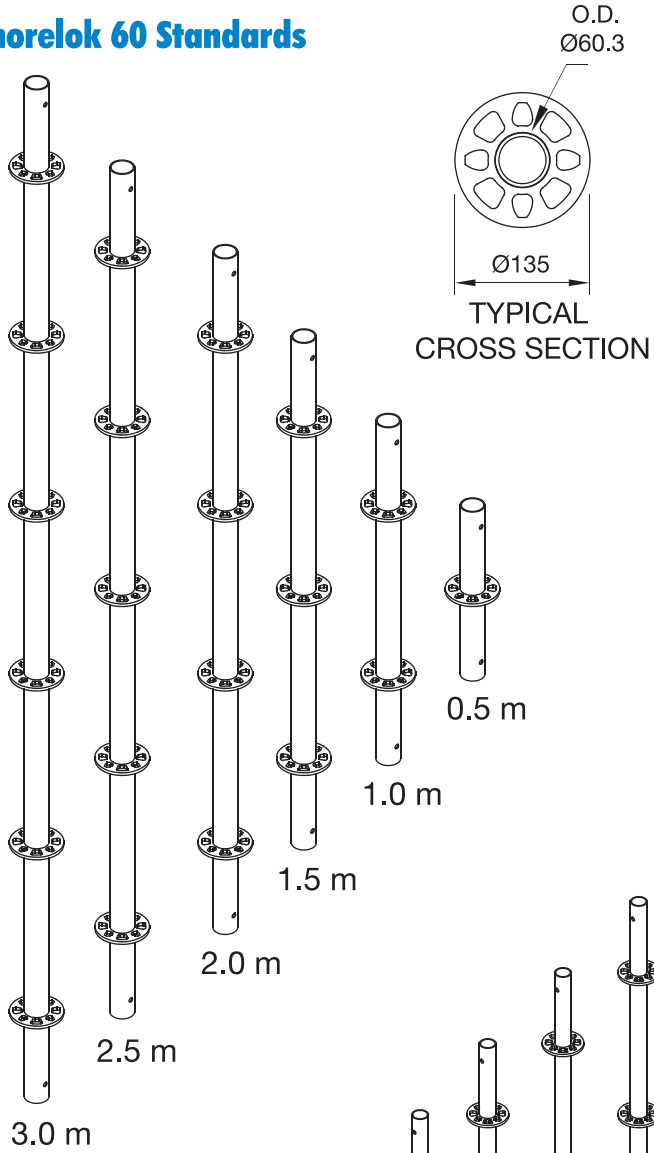
Leg Capacity



Shorelok Standards

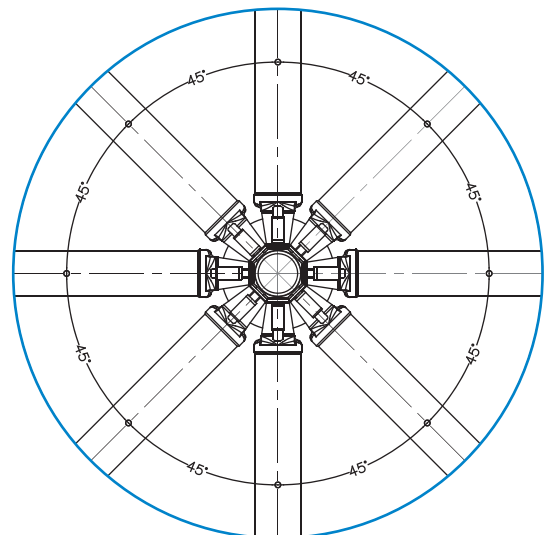
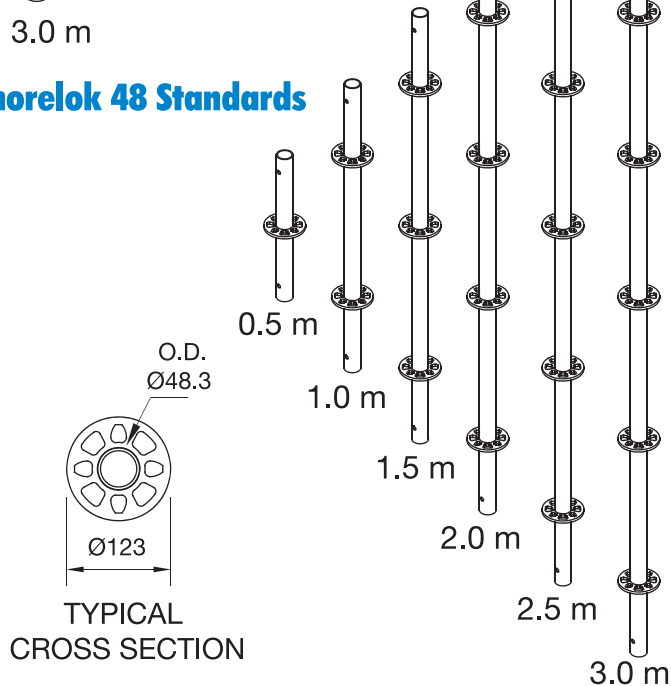
The Shorelok verticals are available to suit any propping or access application economically. The innovative rosette is set at 50cm vertical intervals for maximum versatility in use. Two series of standards are produced to suit various applications.

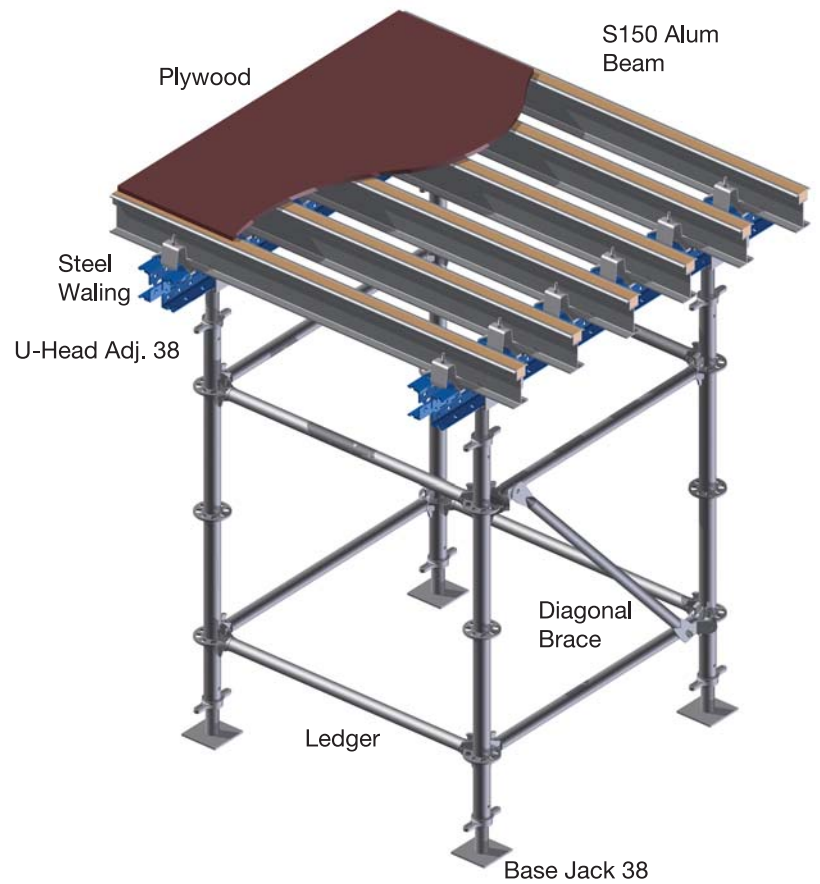
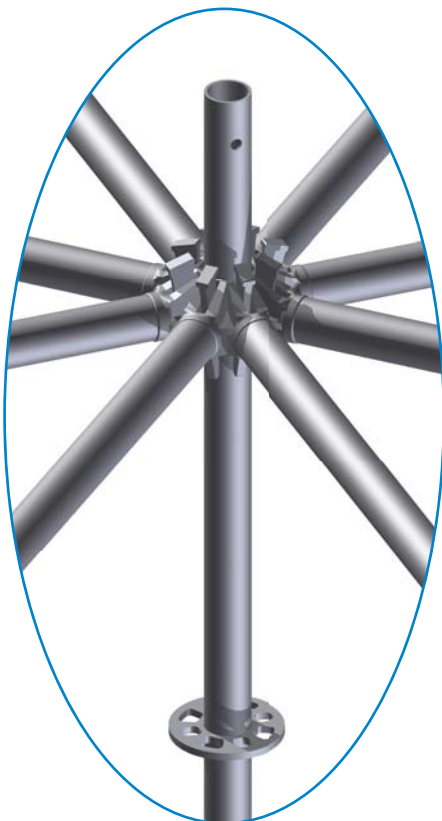
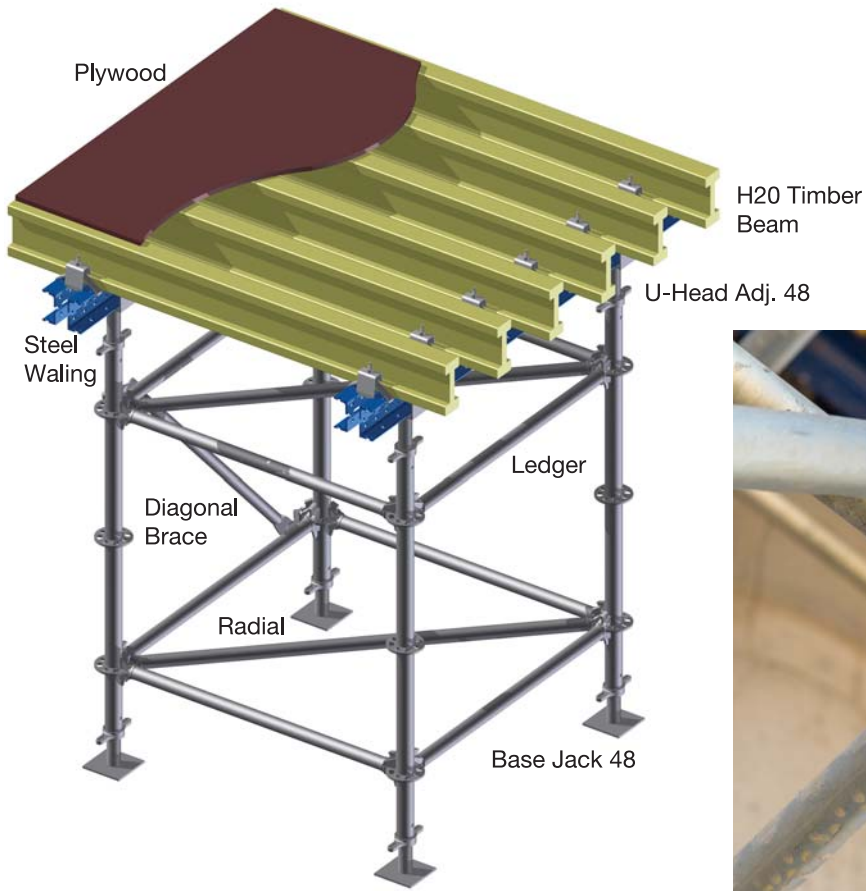
Shorelok 60 Standards



The 60.3 mm dia. standards can be used efficiently for heavy loading applications especially in bridges or transfer slabs. While the 48.3 mm dia. Standards can be used for normal load bearing and access applications.

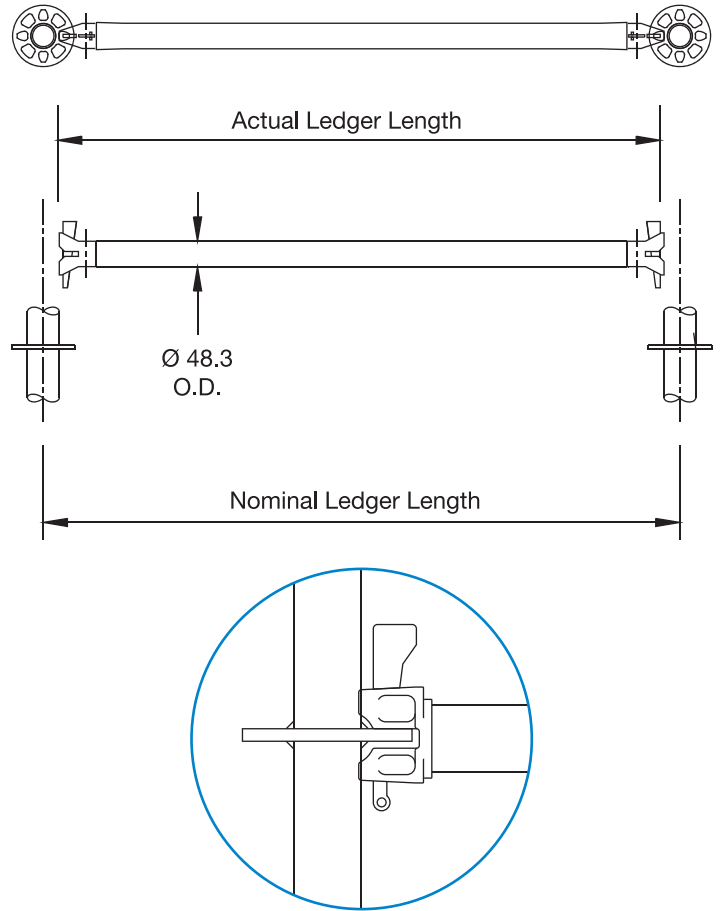
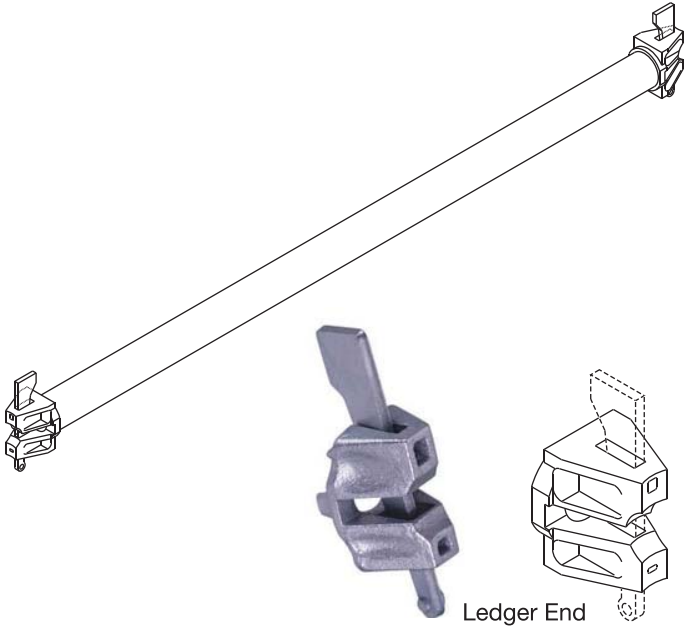
Shorelok 48 Standards



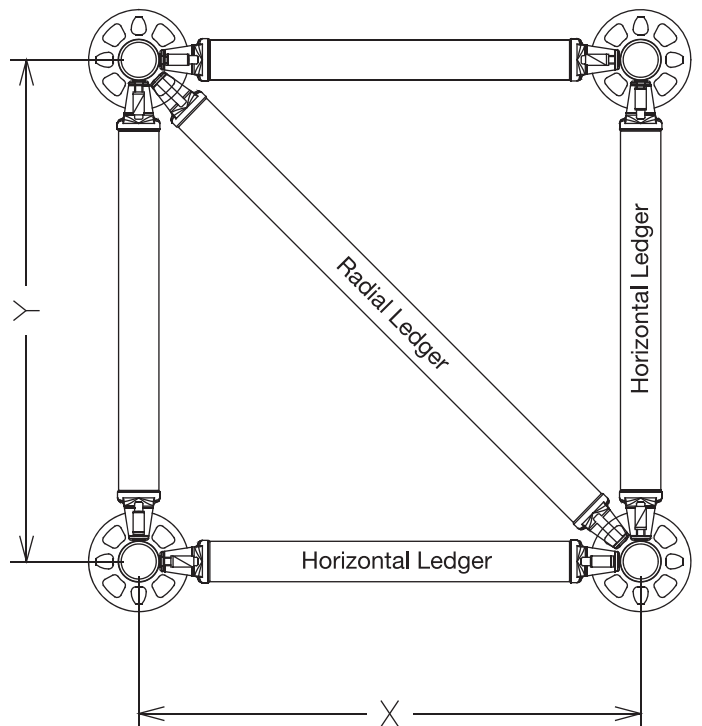


Shorelok Ledgers and Shorelok Radial Ledgers

Horizontals (Ledgers) are available in different range of standard sizes with 48.3mm dia. or if required, can be made to special length. Ledgers are compatible to be used with the two Verticals (Standards) series i.e. 60.3mm and 48.3mm.

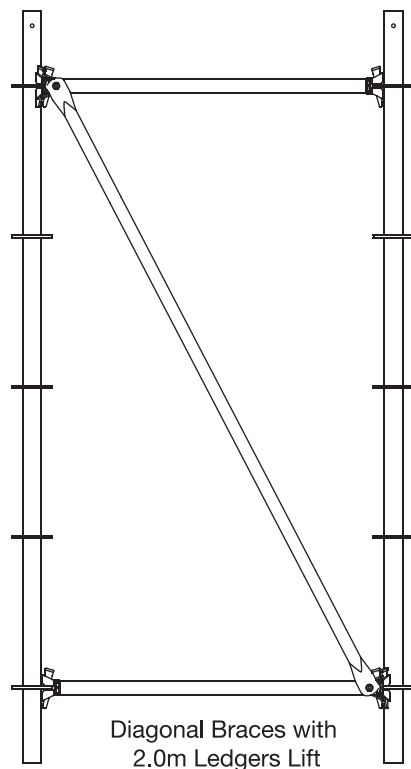
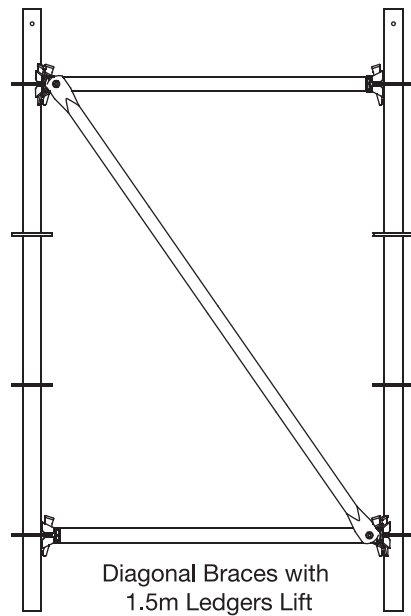
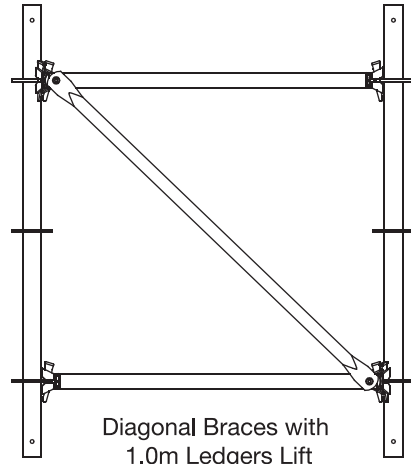
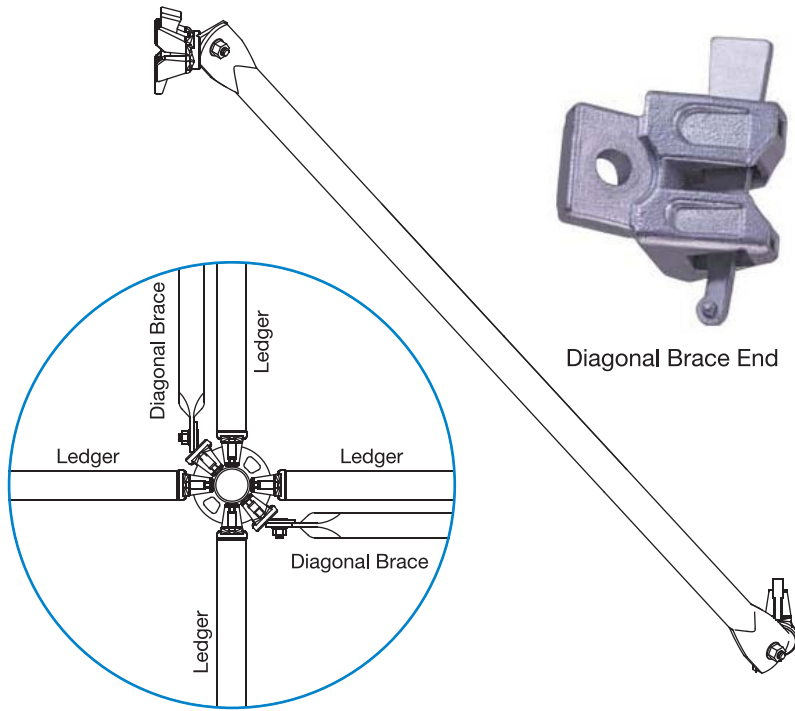


Radial Ledger are designed to connect the Shorelok 60 verticals in a horizontal plan. The 48.3mm radial ledger used to add extra strength enables the Shorelok 60 to transfer high loads efficiently and safely.



Shorelok 60 Diagonal Brace

Diagonal Braces are made from 48.3mm dia. tube with a swivel ledger end and wedge secured at each end for connection to the rosette on the Standard. Their function is to provide transverse and longitudinal bracing to the scaffold structure. The brace is available in various lengths to suit the combination of bay widths and heights.







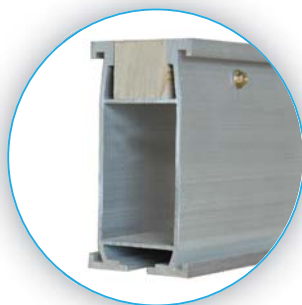




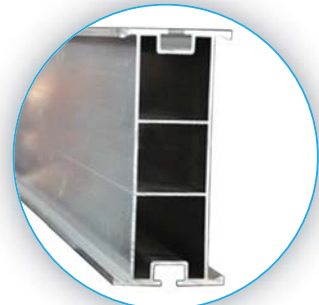




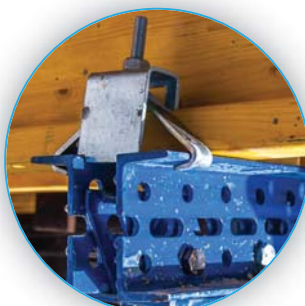
Primary Decking



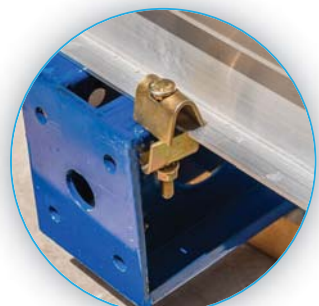
Alum. Beam T150



Alum. Beam T225



**Steel Waling
W12 or W10**

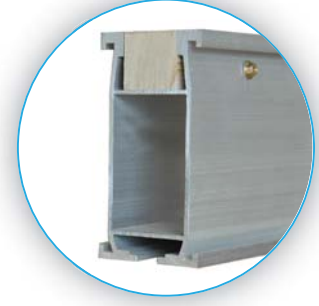


Alum. Beam T225

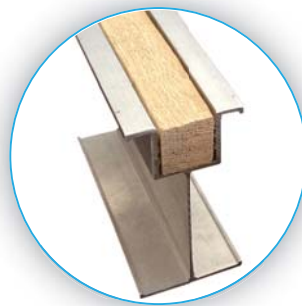
Secondary Decking



H20 Timber Beam



Alum. Beam T150

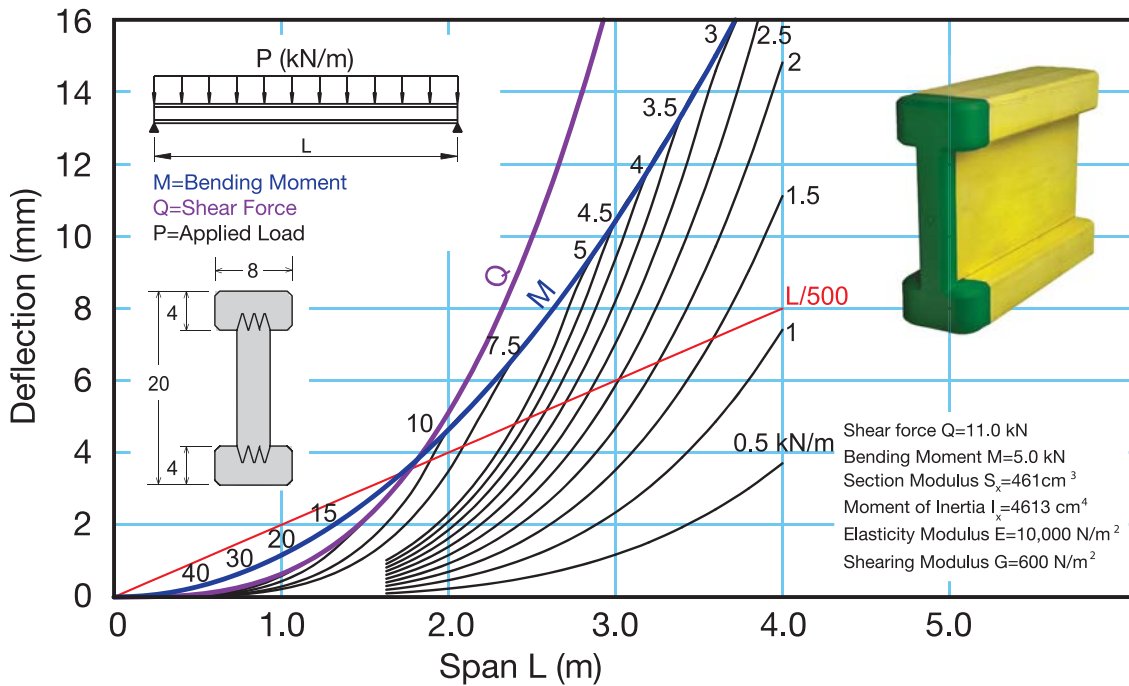
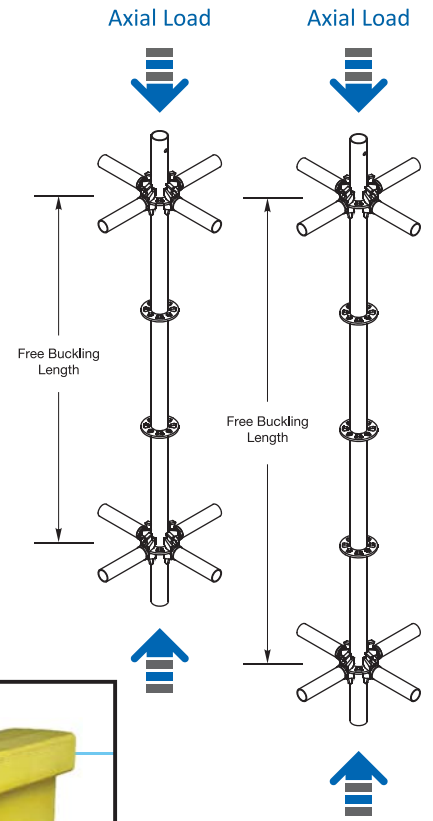
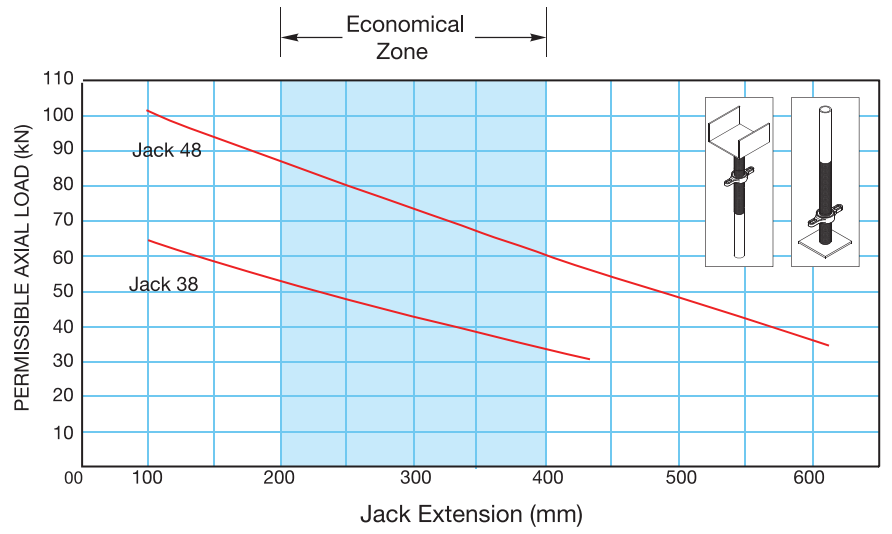
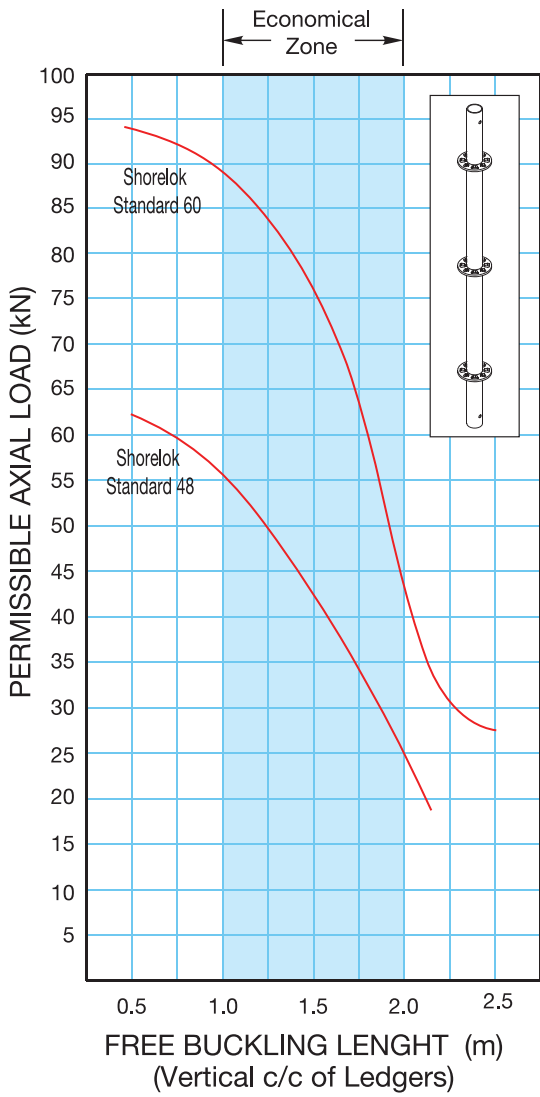


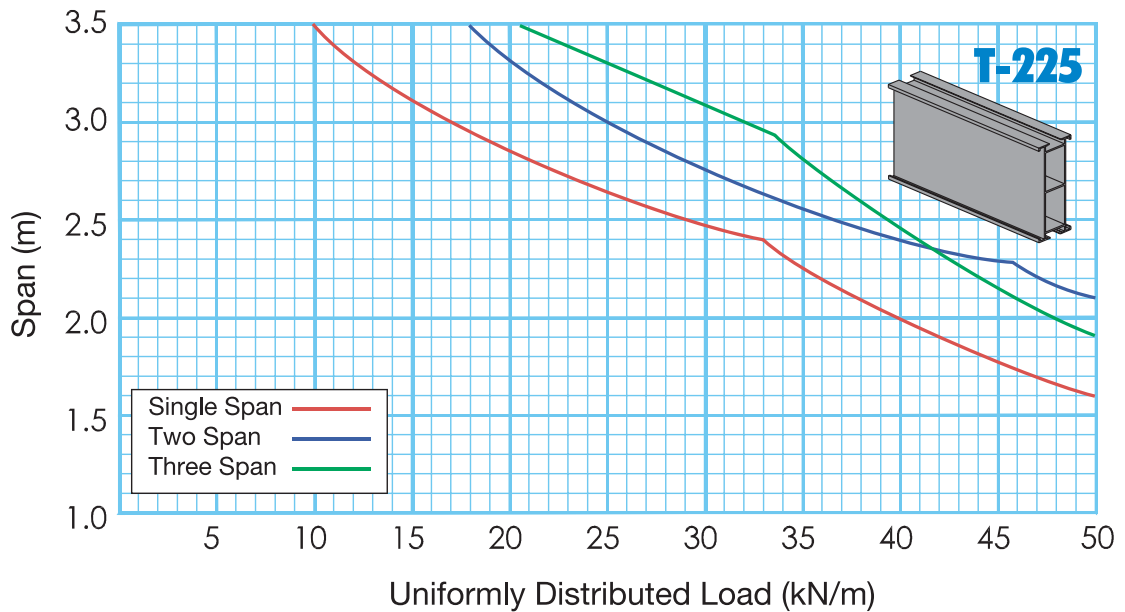
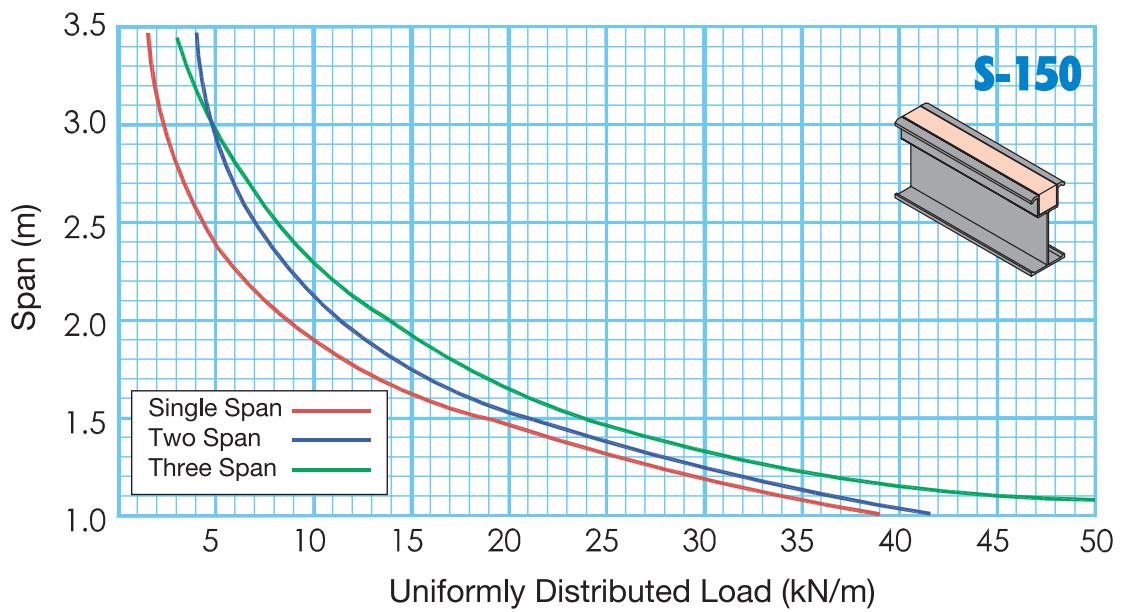
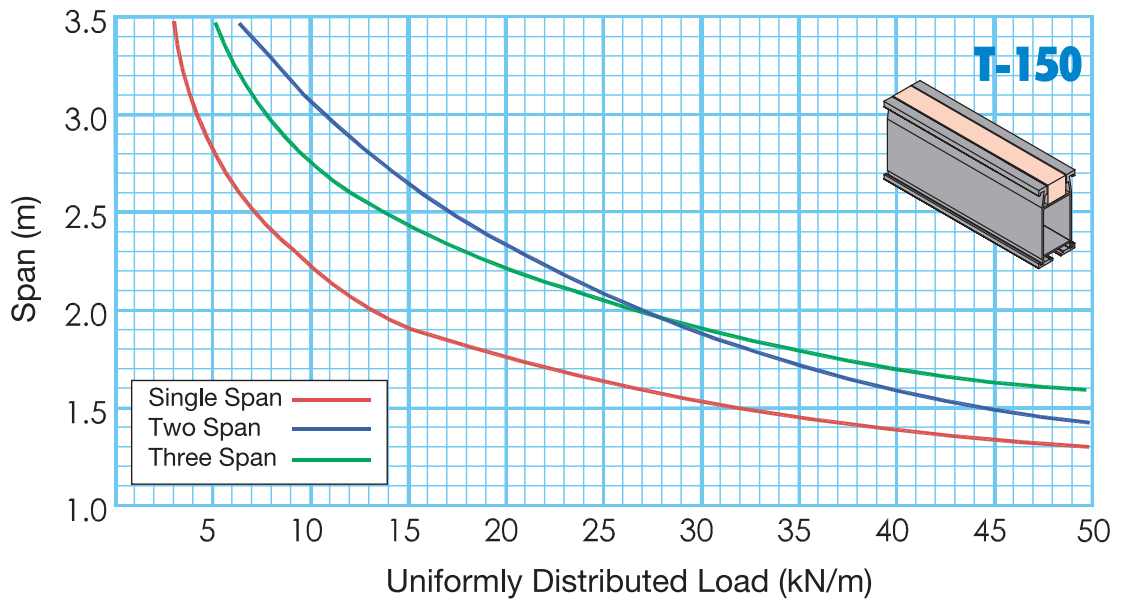
Alum. Beam S150



LVL Beam

Technical Data









Shorelok Standard (SL) - 48		Wt. (kg)	Code
	SL- 48 Standard 050 cm Painted	2.25	FSL01P32A050
	SL- 48 Standard 100 cm Painted	4.50	FSL01P32A100
	SL- 48 Standard 150 cm Painted	6.75	FSL01P32A150
	SL- 48 Standard 200 cm Painted	9.00	FSL01P32A200
	SL- 48 Standard 250 cm Painted	11.25	FSL01P32A250
	SL- 48 Standard 300 cm Painted	13.50	FSL01P32A300

Finish: Painted or EP or H or Dip Galvanized
 Tube dia.: 48.3mm
 50cm between rings (Nodes).

Shorelok Standard (SL) - 60		Wt. (kg)	Code
	SL- 60 Standard 050 cm Painted	2.77	FSL01P32B050
	SL- 60 Standard 100 cm Painted	5.55	FSL01P32B100
	SL- 60 Standard 150 cm Painted	8.32	FSL01P32B150
	SL- 60 Standard 200 cm Painted	11.09	FSL01P32B200
	SL- 60 Standard 250 cm Painted	13.87	FSL01P32B250
	SL- 60 Standard 300 cm Painted	16.64	FSL01P32B300

Finish: Painted or EP or Hot Dip Galvanized
 Tube dia.: 60.3mm
 50cm between rings (Nodes).

Shorelok Ledger (SLL)		Wt. (kg)	Code
	SLL 030 cm Painted	1.76	FSL02P30A030
	SLL 060 cm Painted	2.77	FSL02P30A060
	SLL 090 cm Painted	3.77	FSL02P30A090
	SLL 100 cm Painted	4.11	FSL02P30A100
	SLL 120 cm Painted	4.78	FSL02P30A120
	SLL 130 cm Painted	5.11	FSL02P30A130
	SLL 150 cm Painted	5.78	FSL02P30A150
	SLL 160 cm Painted	6.12	FSL02P30A160
	SLL 180 cm Painted	6.79	FSL02P30A180
	SLL 210 cm Painted	7.79	FSL02P30A210
	SLL 240 cm Painted	8.80	FSL02P30A240
	SLL 250 cm Painted	9.13	FSL02P30A250
SLL 270 cm Painted	9.80	FSL02P30A270	
SLL 300 cm Painted	10.81	FSL02P30A300	

Finish: Painted or EP or Hot Dip Galvanized
 Tube dia.: 48.3mm
 Ledger size defines as center to center of Standards (Verticals)

GS Spigot Connector (SC)		Wt. (kg)	Code
	GS SC Round with Bolts - P	0.98	FSCRB01
	GS SC Square with Bolts - P	0.74	FSCSB01
	GS SC W/ washer - P	0.70	FSCSW01
	GS SC W/ washer & Bolts - P	0.84	FSCSW02
	GS SC Round with Bolts - E	0.98	FSCRE01
	GS SC Square with Bolts - E	0.74	FSCSE01
	GS SC W/ washer - E	0.70	FCSWE01
	GS SC W/ washer & Bolts - E	0.84	FCSWE02

Attached to the standards with M9x75 mm bolt & nut (half threaded)

Shorelok Diagonal Brace (SL DB)		Wt. (kg)	Code
	SL DB 116.6 cm (H=060 V=100)	5.66	FSL19P30A01117
	SL DB 134.5 cm (H=090 V=100)	6.16	FSL19P30A01117
	SL DB 141.4 cm (H=100 V=100)	6.36	FSL19P30A03142
	SL DB 156.2 cm (H=120 V=100)	6.81	FSL19P30A04156
	SL DB 164.0 cm (H=130 V=100)	7.06	FSL19P30A05164
	SL DB 180.3 cm (H=150 V=100)	7.58	FSL19P30A06180
	SL DB 188.7 cm (H=160 V=100)	7.85	FSL19P30A07189
	SL DB 205.9 cm (H=180 V=100)	8.41	FSL19P30A08206
	SL DB 232.6 cm (H=210 V=100)	9.28	FSL19P30A09233
	SL DB 260.0 cm (H=240 V=100)	10.19	FSL19P30A10260
	SL DB 269.3 cm (H=250 V=100)	10.49	FSL19P30A11269
	SL DB 287.9 cm (H=270 V=100)	11.11	FSL19P30A12288
	SL DB 316.2 cm (H=300 V=100)	12.05	FSL19P30A13316
	SL DB 161.6 cm (H=060 V=150)	7.25	FSL19P30A14162
	SL DB 174.9 cm (H=090 V=150)	7.60	FSL19P30A15175
	SL DB 180.3 cm (H=100 V=150)	7.76	FSL19P30A16180
	SL DB 192.1 cm (H=120 V=150)	8.11	FSL19P30A17192
	SL DB 198.5 cm (H=130 V=150)	8.30	FSL19P30A18199
	SL DB 212.1 cm (H=150 V=150)	8.73	FSL19P30A19212
	SL DB 219.3 cm (H=160 V=150)	8.95	FSL19P30A20219
	SL DB 234.3 cm (H=180 V=150)	9.43	FSL19P30A21235
	SL DB 258.1 cm (H=210 V=150)	10.19	FSL19P30A22258
	SL DB 283.0 cm (H=240 V=150)	11.01	FSL19P30A23283
	SL DB 291.3 cm (H=250 V=150)	11.28	FSL19P30A24292
	SL DB 308.9 cm (H=270 V=150)	11.85	FSL19P30A25309
	SL DB 335.4 cm (H=300 V=150)	12.73	FSL19P30A26336
	SL DB 208.8 cm (H=060 V=200)	8.87	FSL19P30A27209
	SL DB 219.3 cm (H=090 V=200)	9.15	FSL19P30A28220
	SL DB 223.6 cm (H=100 V=200)	9.27	FSL19P30A29224
	SL DB 233.2 cm (H=120 V=200)	9.55	FSL19P30A30234
SL DB 238.5 cm (H=130 V=200)	9.71	FSL19P30A31239	
SL DB 250.0 cm (H=150 V=200)	10.06	FSL19P30A32250	
SL DB 256.1 cm (H=160 V=200)	10.25	FSL19P30A33256	
SL DB 269.1 cm (H=180 V=200)	10.65	FSL19P30A34269	
SL DB 290.0 cm (H=210 V=200)	11.32	FSL19P30A35290	
SL DB 312.4 cm (H=240 V=200)	12.04	FSL19P30A36313	
SL DB 320.2 cm (H=250 V=200)	12.29	FSL19P30A37320	
SL DB 336.0 cm (H=270 V=200)	12.81	FSL19P30A38336	
SL DB 360.6 cm (H=300 V=200)	13.61	FSL19P30A39361	

Finish: Painted or E/P or Hot Dip Galvanized

Shorelok Radial (SLR)		Wt. (kg)	Code
	SLR (060x060x084.90) cm	3.65	FSL03P30A060060
	SLR (090x090x127.30) cm	5.07	FSL03P30A090090
	SLR (120x120x169.70) cm	6.49	FSL03P30A120120
	SLR (150x150x212.60) cm	7.91	FSL03P30A150150
	SLR (180x180x254.60) cm	9.34	FSL03P30A180180
	SLR (210x210x297.00) cm	10.76	FSL03P30A210210
	SLR (240x240x339.40) cm	12.18	FSL03P30A240240
	SLR (270x270x381.80) cm	13.60	FSL03P30A270270
SLR (300x300x424.30) cm	15.02	FSL03P30A300300	

Finish: Painted or E/P or Hot Dip Galvanized
 Tube dia.: 48.3mm
 Radial size defines as center to center diagonal distance of Standards

Shorelok Cantilever Beam Frame (SL CBF)		Wt. (kg)	Code
	Painted SL CBF 100 cm	17.14	FSL11P32100
	SL CBF 150 cm	20.22	FSL11P32150
	Electroplated SL CBF 100 cm	17.14	FSL11E32100
	SL CBF 150 cm	20.22	FSL11E32150
	Hot-dip galvanized SL CBF 100 cm	17.14	FSL11G32100
	SL CBF 150 cm	20.22	FSL11G32150

Finish: as shown
 Tube dia.: 48.3mm

Shorelok Beam Bracket (SL BB)		Wt. (kg)	Code
<p>BB 100cm BB 150cm</p> <p>Finish: as shown Tube dia.: 48.3mm</p>	Painted		
	SL BB 100 cm	5.50	FSL12P32100
	SL BB 150 cm	7.28	FSL12P32150
	Electroplated		
	SL BB 100 cm	5.50	FSL12E32100
	SL BB 150 cm	7.28	FSL12E32150
	Hot-dip galvanized		
	SL BB 100 cm	5.50	FSL12G32100
	SL BB 150 cm	7.28	FSL12G32150

Base Jack (BJ)		Wt. (kg)	Code
<p>D/F Jack handle 38mm Hollow tube</p> <p>Plate 15x15cm (With holes) Plate 12x12cm (Without holes)</p> <p>Finish: Painted or electroplated</p>	Painted		
	BJ 65cm H-P 12x12cm-38 Dia.	3.16	FBJN38HP1265
	BJ 65cm H-P 15x15cm-38 Dia.	3.52	FBJN38HP1565
	BJ 76cm H-P 12x12cm-38 Dia.	3.51	FBJN38HP1276
	BJ 76cm H-P 15x15cm-38 Dia.	3.87	FBJN38HP1576
	Electroplated		
BJ 65cm H-E 12x12cm-38 Dia.	3.16	FBJN38HE1265	
BJ 65cm H-E 15x15cm-38 Dia.	3.52	FBJN38HE1565	
BJ 76cm H-E 12x12cm-38 Dia.	3.51	FBJN38HE1276	
BJ 76cm H-E 15x15cm-38 Dia.	3.87	FBJN38HE1576	

GS U-Head Adjustable (UHA)		Wt. (kg)	Code
<p>D/F Jack handle</p> <p>Finish: Painted or electroplated</p>	Painted		
	GS UHA 38H:65 cm:10x10x15 P	4.59	FUHA38H65P101015
	GS UHA 38H:65 cm:10x17x15 P	5.06	FUHA38H65P101715
	GS UHA 38H:65 cm:10x17x20 P	5.91	FUHA38H65P101720
	GS UHA 38H:65 cm:10x19x20 P	6.09	FUHA38H65P101920
	GS UHA 38H:65 cm:10x21x20 P	6.27	FUHA38H65P102120
	GS UHA 38H:76 cm:10x10x15 P	4.95	FUHA38H76P101015
	GS UHA 38H:76 cm:10x17x15 P	5.42	FUHA38H76P101715
	GS UHA 38H:76 cm:10x17x20 P	6.27	FUHA38H76P101720
	GS UHA 38H:76 cm:10x19x20 P	6.45	FUHA38H76P101920
	GS UHA 38H:76 cm:10x21x20 P	6.62	FUHA38H76P102120
	Electroplated		
	GS UHA 38H:65 cm:10x10x15 E	4.59	FUHA38H65E101015
	GS UHA 38H:65 cm:10x17x15 E	5.06	FUHA38H65E101715
GS UHA 38H:65 cm:10x17x20 E	5.91	FUHA38H65E101720	
GS UHA 38H:65 cm:10x19x20 E	6.09	FUHA38H65E101920	
GS UHA 38H:65 cm:10x21x20 E	6.27	FUHA38H65E102120	
GS UHA 38H:76 cm:10x10x15 E	4.95	FUHA38H76E101015	
GS UHA 38H:76 cm:10x17x15 E	5.42	FUHA38H76E101715	
GS UHA 38H:76 cm:10x17x20 E	6.27	FUHA38H76E101720	
GS UHA 38H:76 cm:10x19x20 E	6.45	FUHA38H76E101920	
GS UHA 38H:76 cm:10x21x20 E	6.62	FUHA38H76E102120	

Anchor Plate (AP)		Wt. (kg)	Code
<p>Finish: Painted or E/P Tube dia.: 48.3mm</p>	AP 030 cm Painted	3.07	FAPP030
	AP 060 cm Painted	4.07	FAPP060
	AP 150 cm Painted	7.09	FAPP150
	AP 180 cm Painted	8.09	FAPP180

Steel Staircase (SS)		Wt. (kg)	Code
<p>H= Horizontal (cm) V= Vertical (cm) L= Length (cm) W= Width (cm)</p>	Painted		
	SS-250(H)x200(V)x070(W)x320(L)	75.76	FSC20P070320
	SS-250(H)x200(V)x080(W)x320(L)	82.04	FSC20P080320
	SS-250(H)x200(V)x090(W)x320(L)	88.32	FSC20P090320
	SS-250(H)x200(V)x100(W)x320(L)	94.60	FSC20P100320
	SS-250(H)x200(V)x110(W)x320(L)	100.88	FSC20P110320
	SS-250(H)x200(V)x120(W)x320(L)	107.16	FSC20P120320
	Painted		
	SS-180(H)x150(V)x70(W)x234(L)	67.87	FSC20P070234
	SS-180(H)x200(V)x70(W)x269(L)	71.08	FSC20P070269
SS-250(H)x150(V)x70(W)x292(L)	73.19	FSC20P070292	

Transom		Wt. (kg)	Code
<p>H250 x V150 H180 x V150 H250 x V200 H180 x V200</p>	Painted		
	Transom 060 cm - 3 mm	4.09	FGS08P28060
	Transom 070 cm - 3 mm	4.40	FGS08P28070
	Transom 080 cm - 3 mm	4.72	FGS08P28080
	Transom 090 cm - 3 mm	5.03	FGS08P28090
	Transom 100 cm - 3 mm	5.34	FGS08P28100
	Transom 110 cm - 3 mm	5.66	FGS08P28110
	Transom 120 cm - 3 mm	5.97	FGS08P28120
	Transom 130 cm - 3 mm	6.29	FGS08P28130
	Transom 150 cm - 3 mm	6.92	FGS08P28150
	Transom 160 cm - 3 mm	7.23	FGS08P28160
	Transom 180 cm - 3 mm	7.86	FGS08P28180
	Transom 200 cm - 3 mm	8.49	FGS08P28200
	Transom 210 cm - 3 mm	8.80	FGS08P28210
Transom 240 cm - 3 mm	9.74	FGS08P28240	
Transom 250 cm - 3 mm	10.06	FGS08P28250	

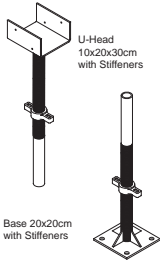
Shorelok 60 - Base Jack & U-Head Adj. (5mm)		Wt. (kg)	Code
<p>U-Head 10x20x30cm with Stiffeners</p> <p>Base 20x20cm with Stiffeners</p> <p>Finish: Painted or E/P Tube dia.: 48.3mm</p>	Shorelok 60 Base Jack (SL-60 BJ)		
	SL-60 BJ (20x20) 120 cm (5 mm)	9.85	FFFBJP4848120
	SL-60 BJ (20x20) 100 cm (5 mm)	8.78	FFFBJP4848100
	SL-60 BJ (20x20) 75 cm (5 mm)	7.45	FFFBJP4848075
	SL-60 BJ (20x20) 65 cm (5 mm)	6.91	FFFBJP4848065
	Shorelok 60 U-Head Adjustable (SL-60 UHA)		
SL-60 UHA (10x20x30) 120 cm (5 mm)	12.77	FFFAUP4848120	
SL-60 UHA (10x20x30) 100 cm (5 mm)	11.70	FFFAUP4848100	
SL-60 UHA (10x20x30) 75 cm (5 mm)	10.37	FFFAUP4848075	
SL-60 UHA (10x20x30) 65 cm (5 mm)	9.83	FFFAUP4848065	

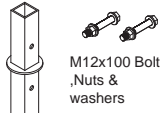
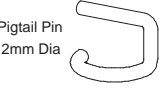
Steel Board (SB)		Wt. (kg)	Code
<p>(B-Type) (with hook) Width= 22cm, Thick.=6.6cm</p> <p>(A-Type) Width= 22cm, Thick.=6.6cm</p>	B Type With Hook		
	SB 060 cm - Painted	6.06	FEXSPB060
	SB 070 cm - Painted	6.68	FEXSPB070
	SB 080 cm - Painted	7.30	FEXSPB080
	SB 090 cm - Painted	7.92	FEXSPB090
	SB 100 cm - Painted	8.55	FEXSPB100
	SB 110 cm - Painted	9.61	FEXSPB110
	SB 120 cm - Painted	9.79	FEXSPB120
	SB 130 cm - Painted	10.41	FEXSPB130
	SB 150 cm - Painted	11.66	FEXSPB150
	SB 160 cm - Painted	12.28	FEXSPB160
	SB 180 cm - Painted	13.52	FEXSPB180
	SB 200 cm - Painted	14.77	FEXSPB200
	SB 210 cm - Painted	15.39	FEXSPB210
SB 230 cm - Painted	16.63	FEXSPB230	
SB 240 cm - Painted	17.57	FEXSPB240	
SB 250 cm - Painted	18.19	FEXSPB250	
SB 280 cm - Painted	20.06	FEXSPB280	
SB 300 cm - Painted	21.30	FEXSPB300	



Anchor Plate (AP)		Wt. (kg)	Code
<p>Finish: Painted or E/P Tube dia.: 48.3mm</p>	A Type plain End		
	SB 050 cm - Painted	4.34	FEXSPA050
	SB 060 cm - Painted	4.96	FEXSPA060
	SB 070 cm - Painted	5.58	FEXSPA070
	SB 080 cm - Painted	6.21	FEXSPA080
	SB 090 cm - Painted	6.83	FEXSPA090
	SB 100 cm - Painted	7.45	FEXSPA100
	SB 110 cm - Painted	8.07	FEXSPA110
	SB 120 cm - Painted	8.69	FEXSPA120
	SB 130 cm - Painted	9.32	FEXSPA130
	SB 150 cm - Painted	10.56	FEXSPA150
	SB 160 cm - Painted	11.18	FEXSPA160
	SB 180 cm - Painted	12.43	FEXSPA180
	SB 200 cm - Painted	13.67	FEXSPA200
SB 230 cm - Painted	15.54	FEXSPA230	
SB 250 cm - Painted	17.11	FEXSPA250	
SB 280 cm - Painted	8.96	FEXSPA280	
SB 300 cm - Painted	20.21	FEXSPA300	
SB 320 cm - Painted	21.45	FEXSPA320	
SB 360 cm - Painted	24.26	FEXSPA360	
SB 390 cm - Painted	26.12	FEXSPA390	
SB 400 cm - Painted	26.75	FEXSPA400	




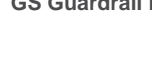

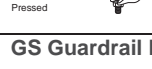
Bolt, Nut and Washer		Wt. (kg)	Code
<p>Full Threaded Bolt, Nut and Washers</p> <p>Half Threaded Bolt, Nut and Washers</p>	Bolt and Nut M12x100 (Half Threaded)	0.14	XFGGH1210
	Bolt and Nut M12x40 (Full Threaded) G8	0.10	XFGBF12040
	Bolt and Nut M16X150	0.33	XFGBF16150
	Bolt, Nut & Washer 16X100 mm	0.20	XFGBF16100
	Bolt, Nut & Washer 16X100 mm G10	0.25	XFGBG16100
	Bolt, Nut & Washer 16X40 mm	0.14	XFGBF16040
	Bolt, Nut & Washer 14X100 mm	0.15	XFGBF14100
	Bolt, Nut & Washer M12X80 (Carriage)	0.09	XFGBF12080
	Bolt, Nut & Washer 10X100 (Half Threaded)	0.08	XFGBH10100
	Bolt, Nut & Washer 10X75 (Full Threaded)	0.07	XFGBF10075
	Bolt, Nut & Washer 10X30 mm	0.04	XFGBON10030W
Bolt and Nut w/o Washer 06x40 mm GI	0.01	XFGBON0640GM	

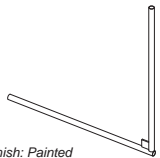
Shorelok 60 - Base Jack & U-Head Adj. (5mm)		Wt. (kg)	Code
<p>U-Head 10x20x30cm with Stiffeners</p> <p>Base 20x20cm with Stiffeners</p> <p>Finish: Painted or E/P Tube dia.: 48.3mm</p>	Shorelok 60 Base Jack (SL-60 BJ)		
	SL-60 BJ (20x20) 120 cm (5 mm)	9.85	FFFBJP4848120
	SL-60 BJ (20x20) 100 cm (5 mm)	8.78	FFFBJP4848100
	SL-60 BJ (20x20) 75 cm (5 mm)	7.45	FFFBJP4848075
	SL-60 BJ (20x20) 65 cm (5 mm)	6.91	FFFBJP4848065
	Shorelok 60 U-Head Adjustable (SL-60 UHA)		
SL-60 UHA (10x20x30) 120 cm (5 mm)	12.77	FFFAUP4848120	
SL-60 UHA (10x20x30) 100 cm (5 mm)	11.70	FFFAUP4848100	
SL-60 UHA (10x20x30) 75 cm (5 mm)	10.37	FFFAUP4848075	
SL-60 UHA (10x20x30) 65 cm (5 mm)	9.83	FFFAUP4848065	

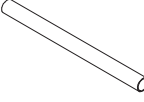
	Wt. (kg)	Code
Shorelok 60 - Base Jack & U-Head Adj. (4mm)		
 <p>U-Head 10x20x30cm with Stiffeners</p> <p>Base 20x20cm with Stiffeners</p>	<p>Shorelok 60 Base Jack (SL-60 BJ)</p> <p>SL-60 BJ (20x20) 120 cm (4 mm) 8.69</p> <p>SL-60 BJ (20x20) 100 cm (4 mm) 7.81</p> <p>SL-60 BJ (20x20) 075 cm (4 mm) 6.72</p> <p>SL-60 BJ (20x20) 065 cm (4 mm) 6.28</p>	<p>FFFBJP4048120</p> <p>FFFBJP4048100</p> <p>FFFBJP4048075</p> <p>FFFBJP4048065</p>
	<p>Shorelok 60 U-Head Adjustable (SL-60 UHA)</p> <p>SL-60 UHA (10x20x30) 120 cm (4 mm) 11.61</p> <p>SL-60 UHA (10x20x30) 100 cm (4 mm) 10.73</p> <p>SL-60 UHA (10x20x30) 075 cm (4 mm) 9.64</p> <p>SL-60 UHA (10x20x30) 065 cm (4 mm) 9.20</p>	<p>FFFAUAP4048120</p> <p>FFFAUAP4048100</p> <p>FFFAUAP4048075</p> <p>FFFAUAP4048065</p>
	<p>Finish: Painted or E/P</p> <p>Tube dia.: 48.3mm</p>	

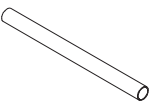
	Wt. (kg)	Code
Shoring Spigot Connector (SSC) & Pigtail		
<p>Length=25cm</p> <p>Painted</p> <p>SSC with Washer 38x250x3 mm 0.98</p>	FSL07PSSC25	
 <p>M12x100 Bolt .Nuts & washers</p> <p>SSC with Washer 38x250x3 mm with Bolts 1.26</p>	FSL07PSSC25B	
<p>Sq. 38x38mm</p> <p>Electroplated</p> <p>SSC with Washer 38x250x3 mm with Bolts 0.98</p>	FSL07ESSC25	
 <p>Pigtail Pin 12mm Dia</p> <p>SSC with Washer 38x250x3 mm with Bolts 1.26</p>	FSL07ESSC25B	
	0.22	FSL07EPPIN

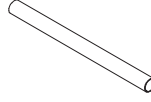
	Wt. (kg)	Code
Base Plate		
 <p>Base Plate 12x12x0.57 MD (Dia-27 x2.0x100) Painted 0.77</p>	FBP27HP1012	
 <p>Base Plate 15x15x0.57 MD (Dia-27 x2.0x100) Painted 1.13</p>	FBP27HP1015	
<p>Plate 15x15cm (With holes) Plate 12x12cm (Without holes)</p> <p>Base Plate 12x12x0.78 HD (Dia-38 x3.8x100) Painted 1.22</p>	FBP38HP1012	
<p>Finish: Painted or E/P</p> <p>Base Plate 15x15x0.78 HD (Dia-38 x3.8x100) Painted 1.71</p>	FBP38HP1015	


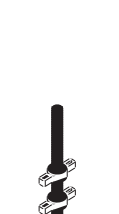

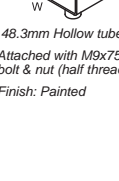
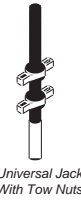


	Wt. (kg)	Code
Scaffold Couplers		
 <p>Double Coupler 1.5"x1.5" (Pressed) 0.73</p>	XFGCDP4848	
 <p>Swivel Coupler 1.5"x1.5" (Pressed) 0.68</p>	XFGCSP4848	
 <p>Double Coupler 1.5"x1.5" (D/F) 0.99</p>	XFGCDD4848	
 <p>Swivel Coupler 1.5"x1.5" (D/F) 1.10</p>	XFGCSD4848	
 <p>Double Coupler 2.0"x1.5" (D/F) 1.20</p>	XFGCDD6048	
 <p>Swivel Coupler 2.0"x1.5" (D/F) 1.25</p>	XFGCSD4860	

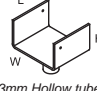
	Wt. (kg)	Code
GS Guardrail Frame		
 <p>GS Guardrail Frame Painted 10.26</p>	FGS99P001	
<p>Finish: Painted</p> <p>Tube dia.: 48.3mm</p>		

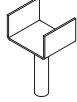
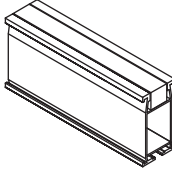
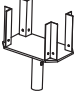
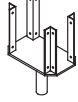
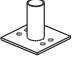

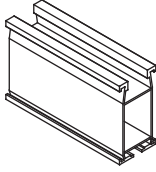
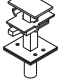

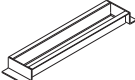
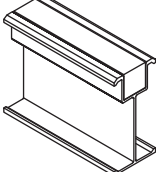
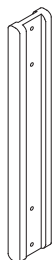
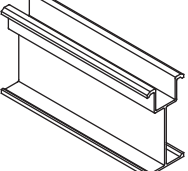
	Wt. (kg)	Code
Scaffold Tube (ST) Black 48.3 mm		
 <p>Tube dia.: 48.3mm</p>	<p>M.D. Tube</p> <p>ST 050 cm MD 1.14</p> <p>ST 100 cm MD 2.28</p> <p>ST 150 cm MD 3.42</p> <p>ST 200 cm MD 4.57</p> <p>ST 250 cm MD 5.71</p> <p>ST 300 cm MD 6.85</p> <p>ST 350 cm MD 7.99</p> <p>ST 400 cm MD 9.13</p> <p>ST 450 cm MD 10.27</p> <p>ST 500 cm MD 11.42</p> <p>ST 550 cm MD 12.56</p> <p>ST 600 cm MD 13.70</p>	<p>FSTN20050</p> <p>FSTN20100</p> <p>FSTN20150</p> <p>FSTN20200</p> <p>FSTN20250</p> <p>FSTN20300</p> <p>FSTN20350</p> <p>FSTN20400</p> <p>FSTN20450</p> <p>FSTN20500</p> <p>FSTN20550</p> <p>FSTN20600</p>
	<p>H.D. Tube</p> <p>ST 050 cm HD 1.68</p> <p>ST 100 cm HD 3.35</p> <p>ST 150 cm HD 5.03</p> <p>ST 200 cm HD 6.70</p> <p>ST 250 cm HD 8.38</p> <p>ST 300 cm HD 10.05</p> <p>ST 350 cm HD 11.73</p> <p>ST 400 cm HD 13.41</p> <p>ST 450 cm HD 15.08</p> <p>ST 500 cm HD 16.76</p> <p>ST 550 cm HD 18.43</p> <p>ST 600 cm HD 20.11</p>	<p>FSTN30050</p> <p>FSTN30100</p> <p>FSTN30150</p> <p>FSTN30200</p> <p>FSTN30250</p> <p>FSTN30300</p> <p>FSTN30350</p> <p>FSTN30400</p> <p>FSTN30450</p> <p>FSTN30500</p> <p>FSTN30550</p> <p>FSTN30600</p>

	Wt. (kg)	Code
Scaffold Tube (ST) Painted		
 <p>Tube dia.: 48.3mm</p>	<p>M.D. Tube</p> <p>ST 050 cm MD 1.14</p> <p>ST 100 cm MD 2.28</p> <p>ST 150 cm MD 3.42</p> <p>ST 200 cm MD 4.57</p> <p>ST 250 cm MD 5.71</p> <p>ST 300 cm MD 6.85</p> <p>ST 350 cm MD 7.99</p> <p>ST 400 cm MD 9.13</p> <p>ST 450 cm MD 10.27</p> <p>ST 500 cm MD 11.42</p> <p>ST 550 cm MD 12.56</p> <p>ST 600 cm MD 13.70</p>	<p>FSTP20050</p> <p>FSTP20100</p> <p>FSTP20150</p> <p>FSTP20200</p> <p>FSTP20250</p> <p>FSTP20300</p> <p>FSTP20350</p> <p>FSTP20400</p> <p>FSTP20450</p> <p>FSTP20500</p> <p>FSTP20550</p> <p>FSTP20600</p>
	<p>H.D. Tube</p> <p>ST 050 cm HD 1.68</p> <p>ST 100 cm HD 3.35</p> <p>ST 150 cm HD 5.03</p> <p>ST 200 cm HD 6.70</p> <p>ST 250 cm HD 8.38</p> <p>ST 300 cm HD 10.05</p> <p>ST 350 cm HD 11.73</p> <p>ST 400 cm HD 13.41</p> <p>ST 450 cm HD 15.08</p> <p>ST 500 cm HD 16.76</p> <p>ST 550 cm HD 18.43</p> <p>ST 600 cm HD 20.11</p>	<p>FSTP30050</p> <p>FSTP30100</p> <p>FSTP30150</p> <p>FSTP30200</p> <p>FSTP30250</p> <p>FSTP30300</p> <p>FSTP30350</p> <p>FSTP30400</p> <p>FSTP30450</p> <p>FSTP30500</p> <p>FSTP30550</p> <p>FSTP30600</p>

	Wt. (kg)	Code
Scaffold Tube (ST) GI		
 <p>Tube dia.: 48.3mm</p>	<p>M.D. Tube</p> <p>ST 050 cm MD 1.14</p> <p>ST 100 cm MD 2.28</p> <p>ST 150 cm MD 3.42</p> <p>ST 200 cm MD 4.57</p> <p>ST 250 cm MD 5.71</p> <p>ST 300 cm MD 6.85</p> <p>ST 350 cm MD 7.99</p> <p>ST 400 cm MD 9.13</p> <p>ST 450 cm MD 10.27</p> <p>ST 500 cm MD 11.42</p> <p>ST 550 cm MD 12.56</p> <p>ST 600 cm MD 13.70</p>	<p>FSTG20050</p> <p>FSTG20100</p> <p>FSTG20150</p> <p>FSTG20200</p> <p>FSTG20250</p> <p>FSTG20300</p> <p>FSTG20350</p> <p>FSTG20400</p> <p>FSTG20450</p> <p>FSTG20500</p> <p>FSTG20550</p> <p>FSTG20600</p>
	<p>H.D. Tube</p> <p>ST 050 cm HD 1.68</p> <p>ST 100 cm HD 3.35</p> <p>ST 150 cm HD 5.03</p> <p>ST 200 cm HD 6.70</p> <p>ST 250 cm HD 8.38</p> <p>ST 300 cm HD 10.05</p> <p>ST 350 cm HD 11.73</p> <p>ST 400 cm HD 13.41</p> <p>ST 450 cm HD 15.08</p> <p>ST 500 cm HD 16.76</p> <p>ST 550 cm HD 18.43</p> <p>ST 600 cm HD 20.11</p>	<p>FSTG30050</p> <p>FSTG30100</p> <p>FSTG30150</p> <p>FSTG30200</p> <p>FSTG30250</p> <p>FSTG30300</p> <p>FSTG30350</p> <p>FSTG30400</p> <p>FSTG30450</p> <p>FSTG30500</p> <p>FSTG30550</p> <p>FSTG30600</p>

	Wt. (kg)	Code	
Universal Jack			
 <p>Universal Jack-65cm-H-P 2.51</p> <p>Universal Jack-76cm-H-P 2.87</p> <p>Universal Jack-86cm-H-P 3.19</p>	FUJN38HP65	FUJN38HP76	FUJN38HP86
 <p>Universal Jack-65cm-H-EP 2.51</p> <p>Universal Jack-76cm-H-EP 2.87</p> <p>Universal Jack-86cm-H-EP 3.19</p>	FUJN38HE65	FUJN38HE76	FUJN38HE86
 <p>Universal Jack-65cm-H-P-W/Hole 2.51</p> <p>Universal Jack-76cm-H-P-W/Hole 2.87</p> <p>Universal Jack-86cm-H-P-W/Hole 3.19</p>	FUJN38HP65H	FUJN38HP76H	FUJN38HP86H
 <p>Universal Jack-65cm-H-EP-W/Hole 2.51</p> <p>Universal Jack-76cm-H-EP-W/Hole 2.87</p> <p>Universal Jack-86cm-H-EP-W/Hole 3.19</p>	FUJN38HE65H	FUJN38HE76H	FUJN38HE86H
 <p>Universal Jack-TN-65cm-H-P 2.94</p> <p>Universal Jack-TN-76cm-H-P 3.30</p>	FUJN38P65TN	FUJN38P76TN	
 <p>Universal Jack-TN-65cm-H-EP 2.94</p> <p>Universal Jack-TN-76cm-H-EP 3.30</p>	FUJN38E65TN	FUJN38E76TN	
 <p>Universal Jack-TN-65cm-H-P W/Hole 2.94</p> <p>Universal Jack-TN-76cm-H-P W/Hole 3.30</p>	FUJN38P65TNH	FUJN38P76TNH	
<p>Universal Jack-TN-65cm-H-EP W/Hole 2.94</p> <p>Universal Jack-TN-76cm-H-EP W/Hole 3.30</p>	FUJN38E65TNH	FUJN38E76TNH	
<p>Universal Jack-TN-76cm-H-P 3.45</p>	FUJH38HP76TN		

	Wt. (kg)	Code
GS Forkhead (FH)		
 <p>48.3mm Hollow tube</p> <p>Attached with M9x75mm bolt & nut (half threaded)</p> <p>Finish: Painted</p>	<p>GS FH 48H/12 Size: 10x10x15-Painted 2.48</p> <p>GS FH 48H/12 Size: 10x17x15-Painted 2.95</p> <p>GS FH 48H/12 Size: 10x17x20-Painted 3.80</p> <p>GS FH 48H/12 Size: 10x19x20-Painted 3.98</p> <p>GS FH 48H/12 Size: 10x21x20-Painted 4.16</p>	<p>FFH48H12P101015</p> <p>FFH48H12P101715</p> <p>FFH48H12P101720</p> <p>FFH48H12P101920</p> <p>FFH48H12P102120</p>

		Wt. (kg)	Code			Wt. (kg)	Code				
Supporting Forkhead (SFH)				Aluminum Beam (AB) T150							
	SFH -38-Painted	2.16	XESSFH		With Timber						
	GS SFH 10x17x20 Painted	3.88	FGF99006		AB T-150 (150 x 80) 050 cm	2.92	FABTT050				
Finish: Painted					AB T-150 (150 x 80) 075 cm	4.37	FABTT075				
					AB T-150 (150 x 80) 100 cm	5.83	FABTT100				
					AB T-150 (150 x 80) 125 cm	7.29	FABTT125				
					AB T-150 (150 x 80) 150 cm	8.75	FABTT150				
					AB T-150 (150 x 80) 175 cm	10.20	FABTT175				
					AB T-150 (150 x 80) 200 cm	11.66	FABTT200				
					AB T-150 (150 x 80) 225 cm	13.12	FABTT225				
					AB T-150 (150 x 80) 250 cm	14.58	FABTT250				
Universal Forkhead (UFH)											
	UFH H20-Painted	3.10	XESUFH20	<i>Aluminum Beam T150 (Timber Size 38x38mm)</i>							
	UFH Alum-Painted	2.83	XESUFHAL								
Finish: Painted				Finish: Mill Finish							
Socket Base Adapter (SBA)											
	SBA Painted	1.38	FGS11P2815	<i>Moment of resistance: 13.00 kN.m Area: 18.87 cm Inertia xx: 574.3 cm Inertia yy: 147.4 cm Section modulus Zxx: 75.36 cm Young's Modulus 69000 N/mm Weight: 5.80 kg/m (with Timber) 5.05 kg/m (without Timber) Timber Wt.=0.75 kg/m</i>							
	SBA Painted	1.41	FGS11P3015								
	SBA Painted	1.43	FGS11P3215								
Finish: Painted				Without Timber							
GS Drophead											
	GS Drophead 20 cm (3.0)	5.26	FGS05P3020								
	GS Drophead 20 cm (2.8)	5.22	FGS05P2820								
With 4 Bolts M10x30mm + Safety pin M6x40 mm Bolt & nut											
Finish: Painted											
	GS Drophead 20 cm (3.0) Welded with Socket Base	5.53	FGS05P3030SB								
	GS Drophead 20 cm (2.8) Welded with Socket Base	5.49	FGS05P2830SB								
With Softy Pin - M6x40mm Bolt & Nut											
Finish: Painted											
GS Decking Beam (DB)											
	GS DB 250 cm	22.81	FGS03P25250					<i>Aluminum Beam T150 (without Timber)</i>			
	GS DB 200 cm	18.40	FGS03P25200								
	GS DB 180 cm	16.75	FGS03P25180								
	GS DB 120 cm	11.52	FGS03P25120								
Finish: Painted											
GS Infill Beam (IB)											
	GS IB 170 cm Painted	7.50	FGS15P18170								
	GS IB 150 cm Painted	6.71	FGS15P18150								
	GS IB 140 cm Painted	6.31	FGS15P18140								
	GS IB 120 cm Painted	5.52	FGS15P18120								
	GS IB 110 cm Painted	5.13	FGS15P18110								
	GS IB 100 cm Painted	4.73	FGS15P18100								
	GS IB 090 cm Painted	4.33	FGS15P18090								
	GS IB 080 cm Painted	3.94	FGS15P18080								
	GS IB 070 cm Painted	3.54	FGS15P18070								
	GS IB 060 cm Painted	3.15	FGS15P18060								
	GS IB 050 cm Painted	2.75	FGS15P18050								
Finish: Painted				Finish: Mill Finish							
H20 Timber Beam (TB)											
	H20 TB 125 cm with End Cup	6.29	FTBH20125E								
	H20 TB 145 cm with End Cup	7.29	FTBH20145E								
	H20 TB 165 cm with End Cup	8.30	FTBH20165E								
	H20 TB 180 cm with End Cup	9.05	FTBH20180E								
	H20 TB 225 cm with End Cup	11.32	FTBH20225E								
	H20 TB 245 cm with End Cup	12.32	FTBH20245E								
	H20 TB 265 cm with End Cup	13.33	FTBH20265E								
	H20 TB 290 cm with End Cup	14.59	FTBH20290E								
	H20 TB 295 cm with End Cup	14.84	FTBH20295E								
	H20 TB 330 cm with End Cup	16.60	FTBH20330E								
	H20 TB 360 cm with End Cup	18.11	FTBH20360E								
	H20 TB 390 cm with End Cup	19.62	FTBH20390E								
	H20 TB 450 cm with End Cup	22.64	FTBH20450E								
	H20 TB 490 cm with End Cup	24.65	FTBH20490E								
	H20 TB 590 cm with End Cup	29.68	FTBH20590E								
	H20 TB 1190 cm with End Cup	59.86	FTBH201190E								
Moment: 5.00 kN.m Shear: 11 kN Area: 18.87 cm ² E.I.=500 kNm ²				<i>Aluminum Beam S150 (without Timber)</i>							
Supports are rounded at the end for damage protection. Web-three layer crosswise laminated solid timber panel.											
	H20 TB (200x80) 0125 cm	6.25	FTBH20125	<i>moment of resistance: 6.80 kN.m Area: 11.96 cm Inertia xx: 356 cm Inertia yy: 43.764 cm Section Modulus Zxx: 47.15 cm Toung's Modulus: 69000 N/mm Weight: 3.95 kg/m (with Timber) 3.20 kg/m (without Timber) Timber Wt.=0.75 kg/m</i>							
	H20 TB (200x80) 0145 cm	7.25	FTBH20145								
	H20 TB (200x80) 0165 cm	8.25	FTBH20165								
	H20 TB (200x80) 0180 cm	9.00	FTBH20180								
	H20 TB (200x80) 0225 cm	11.25	FTBH20225								
	H20 TB (200x80) 0245 cm	12.25	FTBH20245								
	H20 TB (200x80) 0265 cm	13.25	FTBH20265								
	H20 TB (200x80) 0290 cm	14.50	FTBH20290								
	H20 TB (200x80) 0295 cm	14.75	FTBH20295								
	H20 TB (200x80) 0330 cm	16.50	FTBH20330								
	H20 TB (200x80) 0360 cm	18.00	FTBH20360								
	H20 TB (200x80) 0390 cm	19.50	FTBH20390								
	H20 TB (200x80) 0450 cm	22.50	FTBH20450								
	H20 TB (200x80) 0490 cm	24.50	FTBH20490								
	H20 TB (200x80) 0590 cm	29.50	FTBH20590								
	H20 TB (200x80) 1190 cm	59.50	FTBH201190								



Abu Dhabi

Dubai

T: +971 2 5500688

T: +971 4 8862855

F: +971 2 5500689

F: +971 4 5562558

P.O. BOX: 41851, Abu Dhabi, UAE

P.O. BOX: 18234, Jebel Ali, UAE

WWW.SCAFFCO.COM